

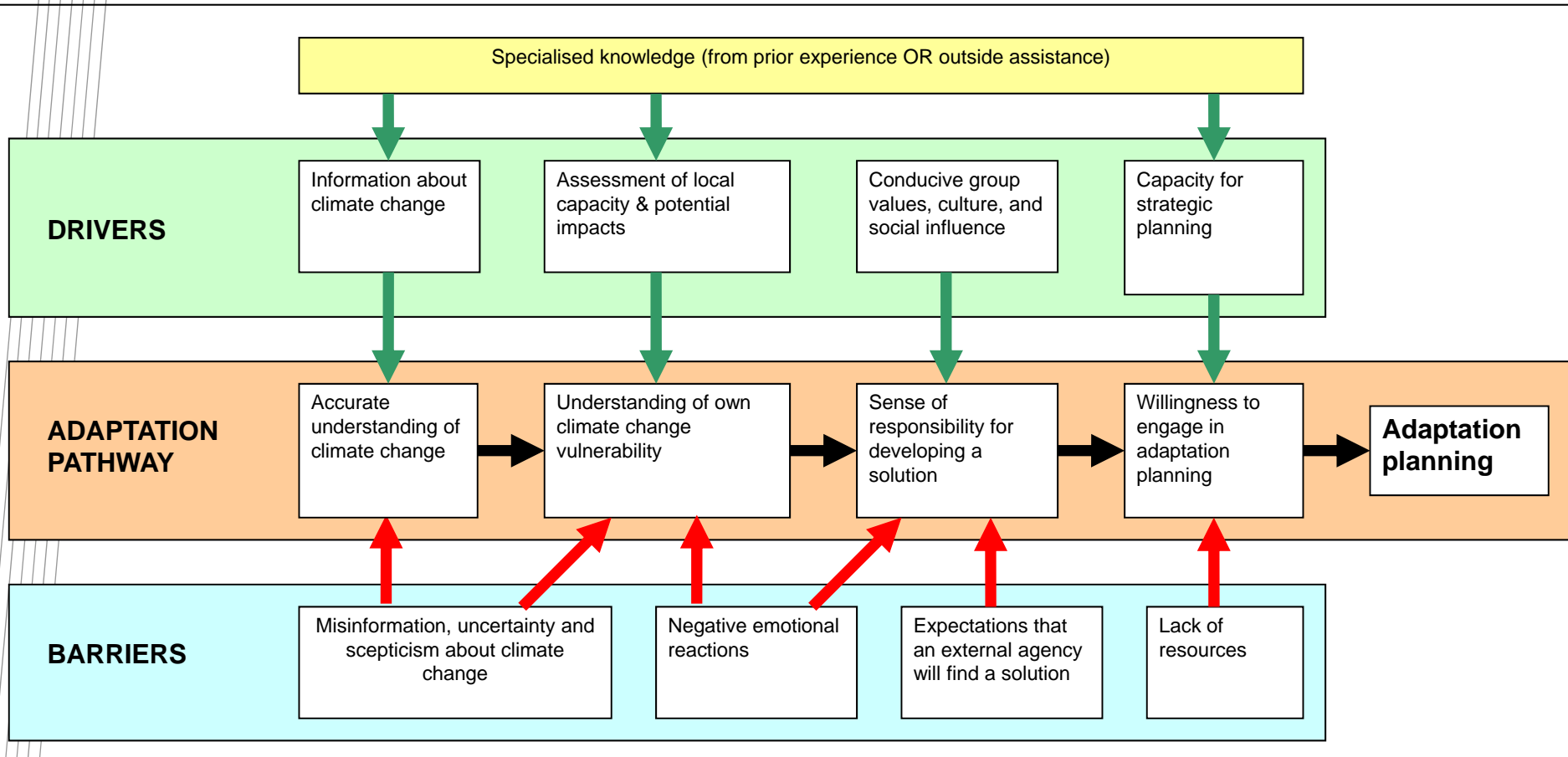
Benchmarking the level of adaptation planning in Australian organisations

John Gardner
Greenhouse 2011
7th April

Research Aims

- Provide a baseline measure of adaptation activity in relevant Australian organisations
- Track changes over time
- Where possible, assess the impact of CAF and DCCEE on adaptation planning efforts

A Pathway Model of Adaptation Planning



Survey questions:

- Beliefs about climate change
- Importance of mitigation and adaptation
- Has vulnerability been assessed?
- Are adaptation activities underway?
- Contact with CSIRO and/or DCCEE
- Various background measures

Data collection

- Randomly selected sample of public- and private-sector organisations from a variety of types
- ~30 minute telephone interviews of representatives from each organisation
- ~60 minute in-depth interviews with some participants
- Additional interviews of state and federal agencies conducted by DCCEE

Types of organisations

1. Industry

- Natural resource management groups
- Parks management
- Construction
- Health
- Tourism
- Agribusiness
- Forestry
- Fisheries/Aquaculture
- Insurance/Finance/Banking
- Mining
- Emergency Management

2. Local government

- Urban councils
- Rural/remote councils
- Related bodies (LGAs, etc)

3. Infrastructure management

- Ports
- Transport (road/rail/air)
- Water
- Energy
- Property

4. Associations and NGOs

- Built environment
- Natural environment/land use
- Indigenous groups
- Other associations/groups

Samples in the study

Sample A1

Sample A2

Sample B

2008/2009

(~20 months)

2010

Samples in the study

Sample A1

- 242 surveys
- 16 depth interviews

Sample A2

Sample B

2008/2009

(~20 months)

2010

Samples in the study

Sample A1

- 242 surveys
- 16 depth interviews

Sample A2

- 201 surveys
- 16 depth interviews

Sample B

2008/2009

(~20 months)

2010

Samples in the study

Sample A1

- 242 surveys
- 16 depth interviews

Sample A2

- 201 surveys
- 16 depth interviews

Sample B

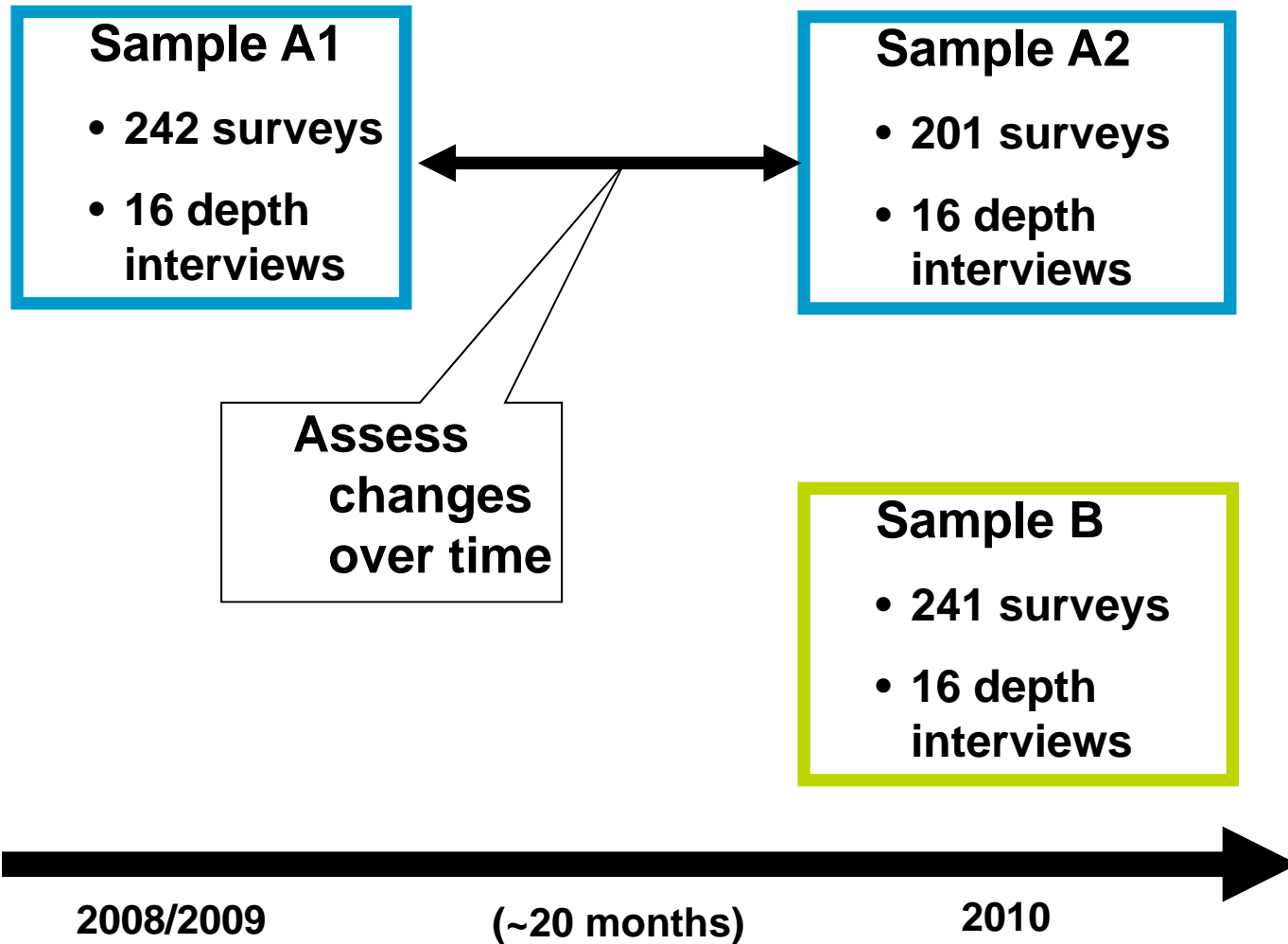
- 241 surveys
- 16 depth interviews

2008/2009

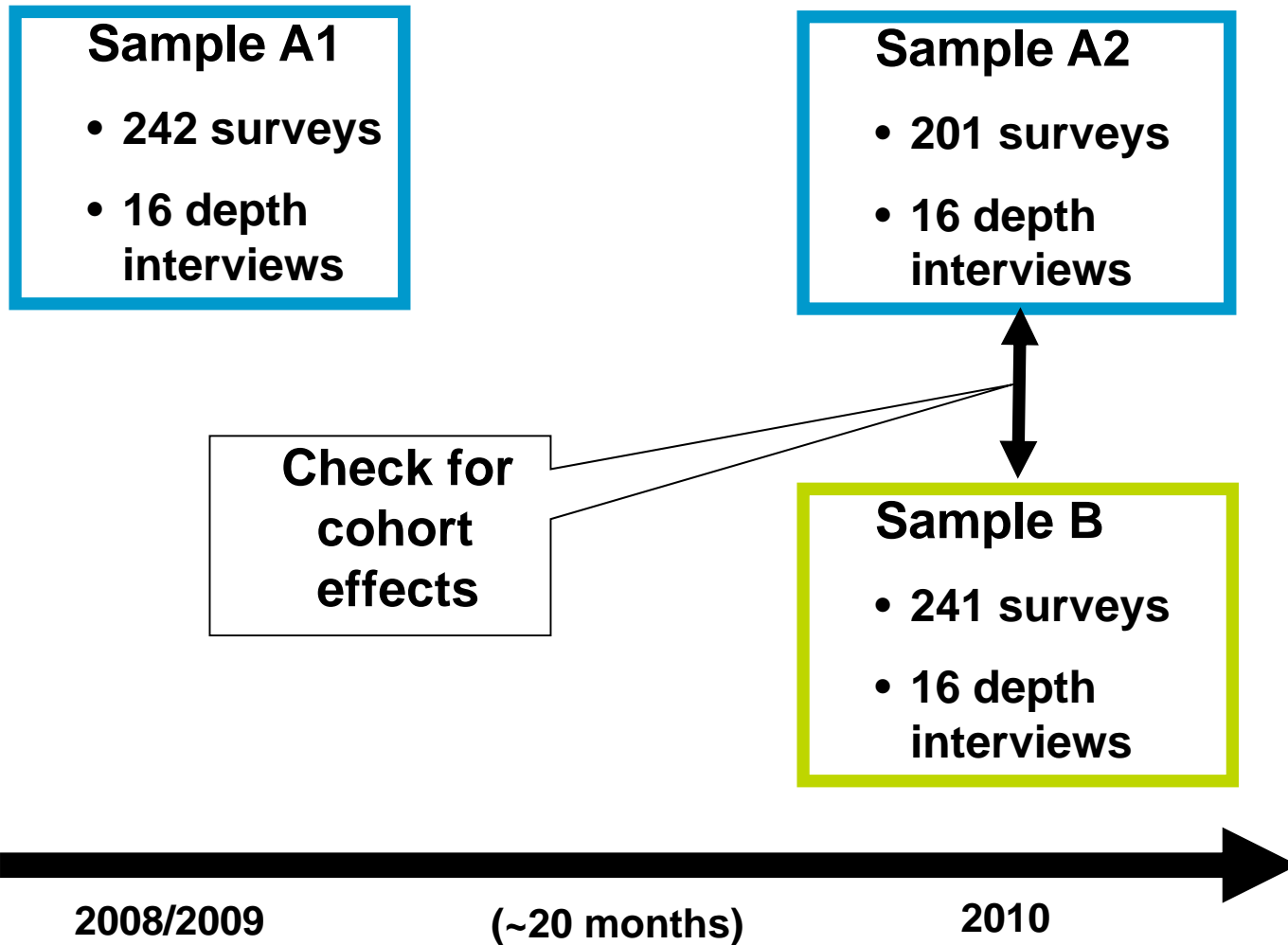
(~20 months)

2010

Samples in the study



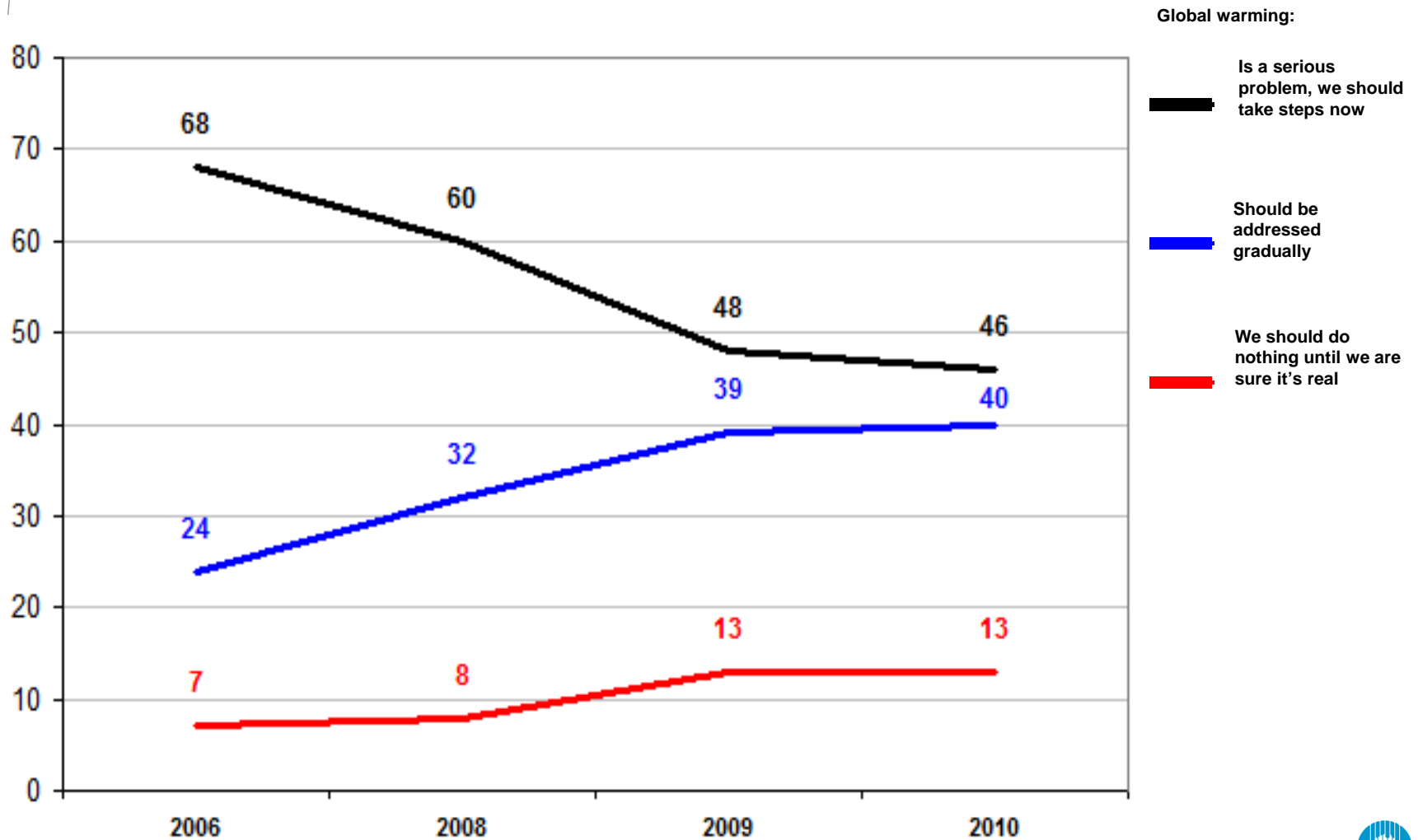
Samples in the study



Changes in attitudes to climate change

Question	Sample A1	Sample A2
How convinced are you that climate change is a real problem for Australia?	4.39	4.29
How important is climate change to your organisation?	3.93	3.64*
How familiar are you with notions of mitigation?	4.05	3.64*
How familiar are you with notions of adaptation?	3.89	3.62*
How important to your organisation is mitigation?	3.58	3.57
How important to your organisation is adaptation?	4.10	3.65*

Australian public attitudes to climate change



Predictors of vulnerability assessment and adaptation activity

Percent of organisations (at time 2)	No contact (time 1)	Contact with CSIRO (time 1)
Assessed vulnerability of the organisation	35.2%	64.5%*
Taken action or made plans for adaptation	25.0%	48.7%*

Drivers of adaptation planning

- knowledge of climate change in general,
- presence of formal vulnerability assessment,
- experience with longer-term strategic planning,
- contact with external organisations to provide information and assistance.

Assessments of Vulnerability

- Assessment rates were highest amongst:
 - insurance/banking/finance companies
 - natural resource management groups
 - energy providers
 - natural environment groups
- The highest levels of vulnerability were reported by:
 - local government-related bodies
 - built environment groups
 - urban councils

Adaptation Planning

- The most common activities were
 - water supply planning,
 - natural resource management planning, and
 - general “adaptation planning”
- The highest rates of adaptation were reported by
 - natural resource management groups,
 - local government-related bodies and
 - parks management groups

Limitations and further issues

- The sample is too small to legitimately generalise to “Australian organisations”.
- There are many people describing mitigation activities when asked about adaptation.
- We need to establish whether contact leads to adaptation or the reverse
- How do we best use CSIRO’s resources to promote effective adaptation in vulnerable Australian organisations?
 - What level of contact is enough?
 - Can we identify types of organisations that need more help?
 - Are there other ways of spreading adaptation ‘best practice’?

CSIRO

John Gardner
Research Scientist

Phone: 07 3327 4076
Email: john.gardner@csiro.au
Web: www.csiro.au

www.csiro.au

Thank you

Contact Us

Phone: 1300 363 400 or +61 3 9545 2176
Email: enquiries@csiro.au Web: www.csiro.au

